

Elite<sup>SERIES</sup> 2

SUPER FILTRATION + ALKALINE + RE-MINERALISER

# ALKALINE WATER FILTER SYSTEM



## WHAT'S INCLUDED



Filter Tap



Filter Head Unit



Cartridges x 4



[PLV]  
Pressure Limiting Valve  
350kpa



Tee Piece Isolation Valve 1/2"



Pipe Clamp



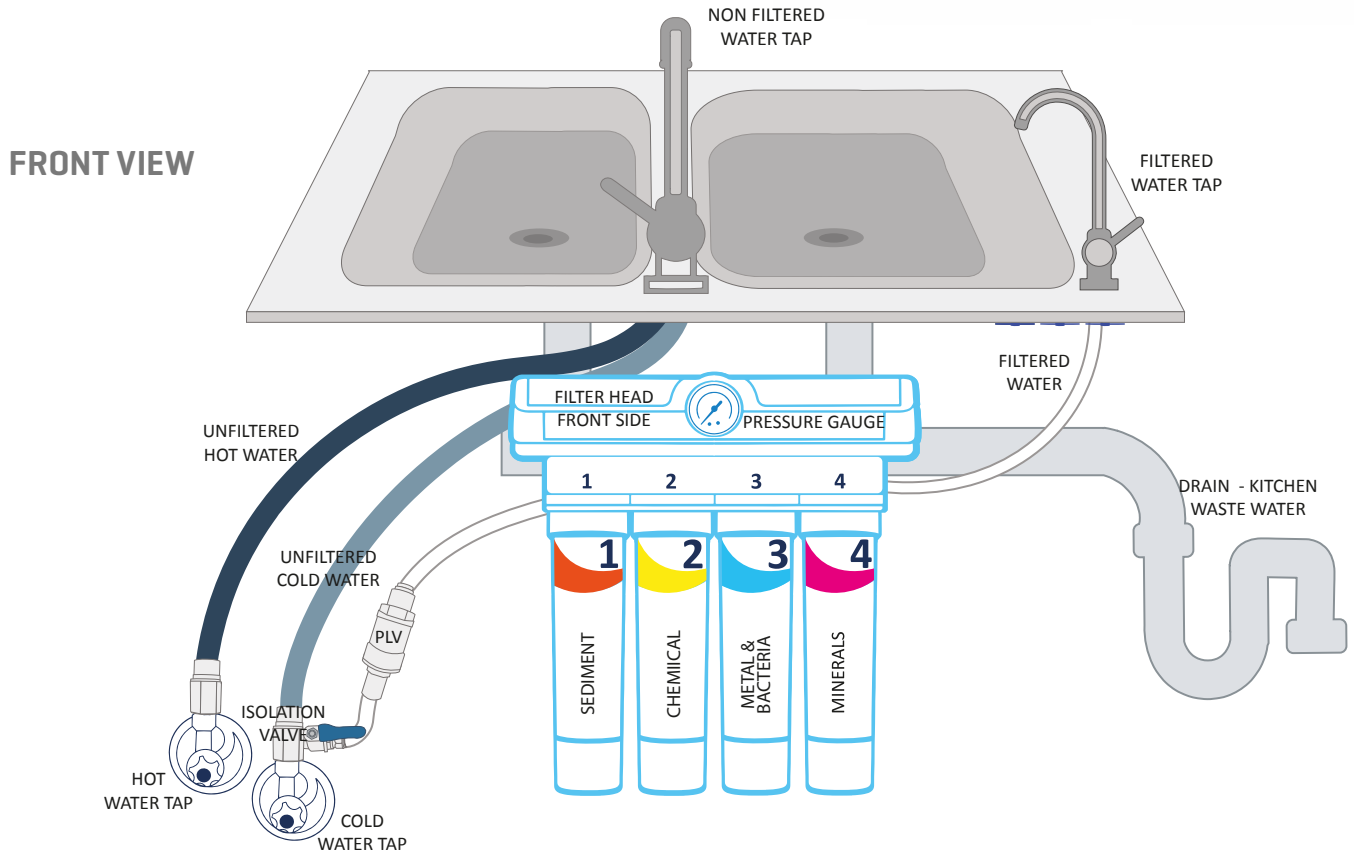
Water Filter Tube  
[6mm Ø - 3metres]

## SPECIFICATIONS

<b>Dimensions</b>	Filter Unit 33cm x 33cm x 9cm
<b>Flow Rate</b>	3 Litres per Minute
<b>Weight</b>	3.5kg
<b>Tap Drill Hole Diameter</b>	12mm
<b>Cartridge Life</b>	10-12 months

Cartridges are made from high quality, natural materials, and are clinically tested.

To ensure optimal performance, please read these instructions carefully prior to installation.



## Back of Filter Unit



- Turn OFF water supply to property before commencing installation
- Connect supplied tee piece isolation valve to cold water supply under the sink
- Cut the supplied tube to approximately 1 metre length. Run this tube from the isolation valve to **'To Water Inlet'** on back of Elite Series 2 filter unit
- Cut the tube close to the isolation valve and connect the pressure limiting valve between the isolation valve and **'To Water Inlet'** on back of filter unit
- To install filter tap, drill 12mm hole in sink or stone benchtop making sure there is enough clearance under the bench to fasten nut
- Run the remaining 6mm tube from the filter tap to **'To Faucet'** on the back of Elite Series 2 filter unit
- Install all the filter cartridges by pushing in and turning in anti-clockwise direction
- Turn water supply ON and flush the system for 10 minutes

filter

# CARTRIDGE INSTALL & FLUSH



## 4-STAGE Alkaline Water Filter

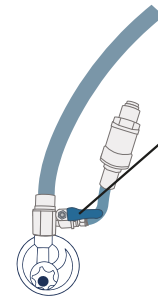


### Cartridges

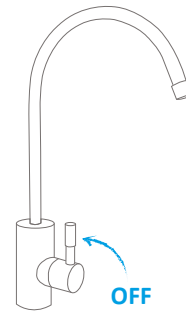
- Stage 1** – Cellulose Fibre
- Stage 2** – Coconut Shell Carbon
- Stage 3** – KDF + Coconut Shell Carbon
- Stage 4** – Super Alkaliser & Minerals

- Turn OFF the isolation valve located under your sink
- Turn ON the filter tap on your sink to flush out any remaining water in tube
- Remove old cartridges, if applicable. Simply twist clockwise, just like a lightbulb!
- Install new cartridges in the correct order, simply twist counter-clockwise into the filter head unit.
- Turn the isolation lever back to the on position
- Turn on the filter tap to **flush** the cartridges. Leave on for 5 minutes.

**You're right to Go! Enjoy another year of great tasting, pure water**



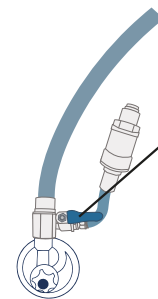
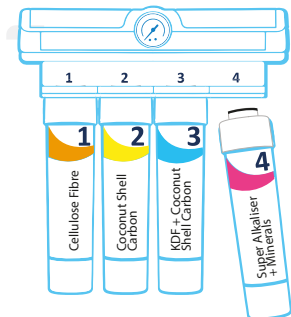
Under sink, turn OFF Isolation Valve



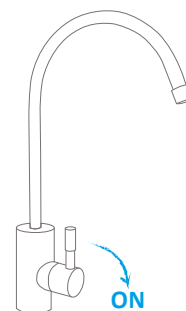
Turn filter tap OFF to flush out remaining water

### INSTALL

- Install cartridges in the correct order



Under sink, turn ON Isolation Valve



Turn filter tap ON and flush for 5 minutes